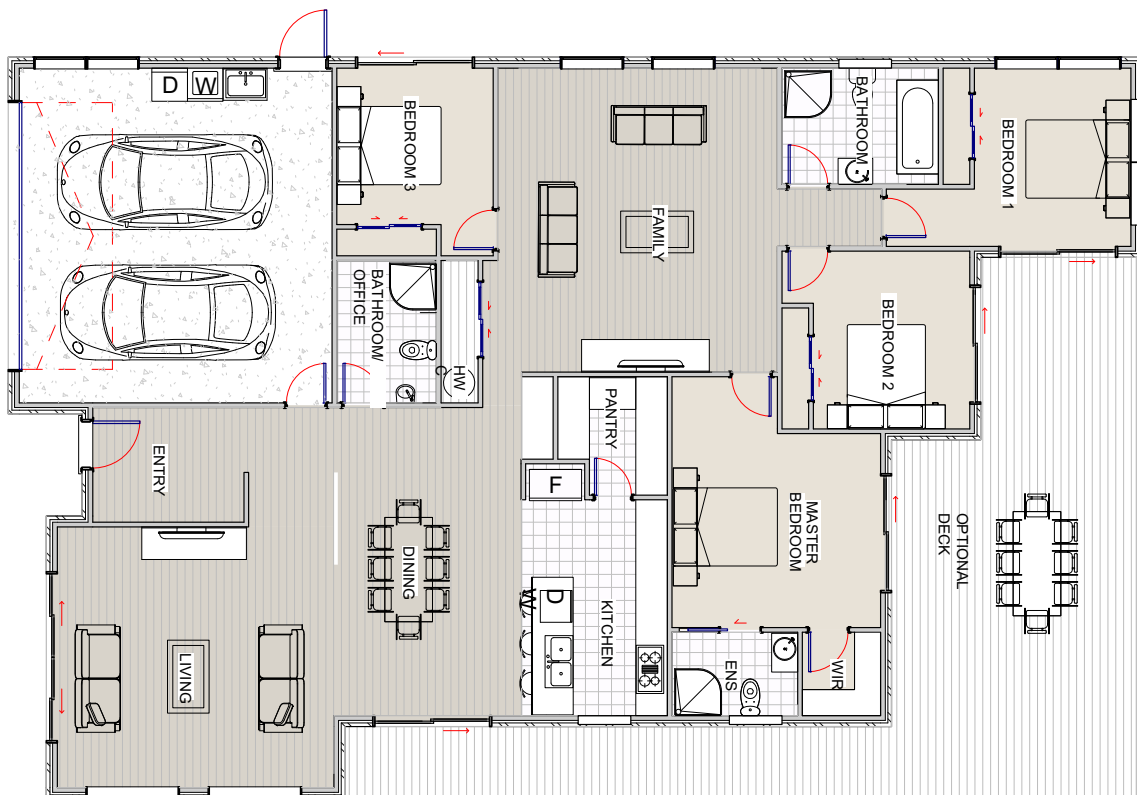




This delightful 4-bedroom home's main entrance opens into a hallway which leads into the open plan dining, living room and large entertainer's kitchen. Or enter from the double internal access garage into the dining area next to one of three bathrooms. Hidden behind a large and well-considered kitchen is a Master bedroom with walk in wardrobe and ensuite, which opens to an optional deck to extend its living space. Nestled next to the main bathroom are bedrooms one and two, which are located next to the main family room. The third bedroom is closest to the family room to potentially keep children or early risers contained on this side of the house.



Floor Area: 244.11m²



2



4



3



2

21.50m 14m

© Copyright Nexus Homes. All Rights Reserved

Contact us:

Phone: (07) 859 1089

Email: info@nexushomes.co.nz

www.nexushomes.co.nz



NEXUS HOMES[®]